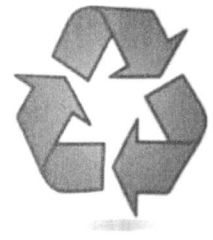


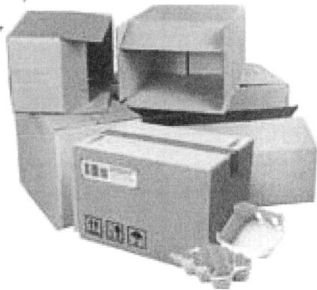
## Tri-County Industries, Inc

159 TCI Park Drive  
Grove City, PA 16127  
724-748-4705



# RECYCLING GUIDELINES

## Acceptable Materials:



### CARDBOARD

Flattened cardboard boxes, dry food boxes non-wax coated paper boxes, egg cartons.



### PAPER:

Newspaper, junk mail, office paper, magazines.



### PLASTICS:

Water & soda bottles, milk & water jugs, liquid detergent bottles, plastics labeled #1, #2, or #5.



### METAL:

Aluminum cans, steel & bi-metal cans, clean aluminum foil, metal food & beverage containers.



### \*GLASS:

Clear, brown, amber, & green beverage bottles and food jars.

\*Glass is repurposed, but not recycled to the PA DEP's definition.

Glass will be collected in your recycling container from your municipality to be repurposed for another use.

### RECYCLING REMINDERS:

- Don't bag your recyclables. Recyclables should be placed loose in your recycling cart.
- Rinse your recyclables. Recyclables should be empty and rinsed clean of any food residue.
- Set out prescribed container the night before your scheduled collection day. Place within 5-ft of the curb or roadside.
- Wet paper materials will not be collected. Place in the trash the following week.
- Recyclables that are mixed with garbage will not be collected. Place in the trash the following week.